



## Petroleum Geology of the Timan-Pechora Province

### A major study based on a comprehensive analysis of the Russian-language and International literature

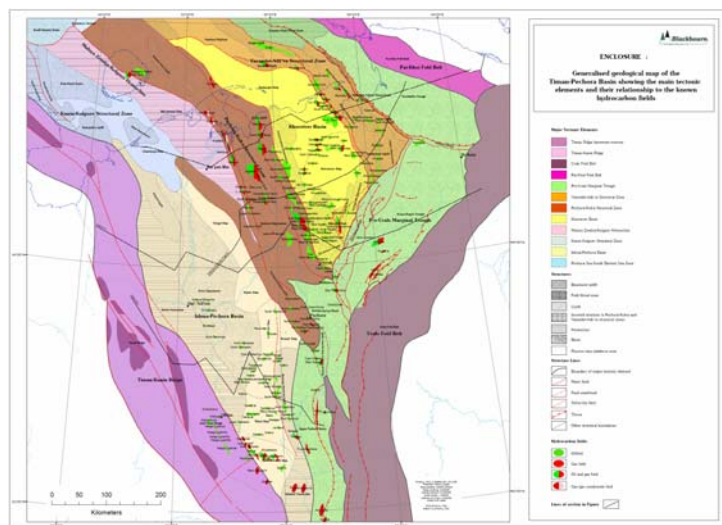
The Timan-Pechora Basin lies in the northeast of European Russia. To west and southwest it abuts the East European Platform along the Timan-Kanin Ridge; to the east and northeast it is bounded by the sinuous fold belts of the Urals and Pai-Khoi. The Timan-Kanin Ridge and Urals Mountains intersect in the south to give the basin its characteristic triangular shape.

The structures of the Timan-Pechora Basin broaden to the north and extend offshore under the Pechora Sea to the South Barents transform fault zone which separates the Pechora block from the South Barents Basin.

This report contains descriptions of the geological history and **tectonics** of the area, **basin development**, **palaeogeography**, **stratigraphy**, known and prospective reservoirs, source rocks and seals, an assessment of the main play fairways, and risked yet-to-find hydrocarbon reserves.

The main basins covered include:

- Pechora-Kolva Basin
- Izhma-Pechora Basin
- Khoreiver Basin
- Northern Pre-Urals
- Pechora Sea

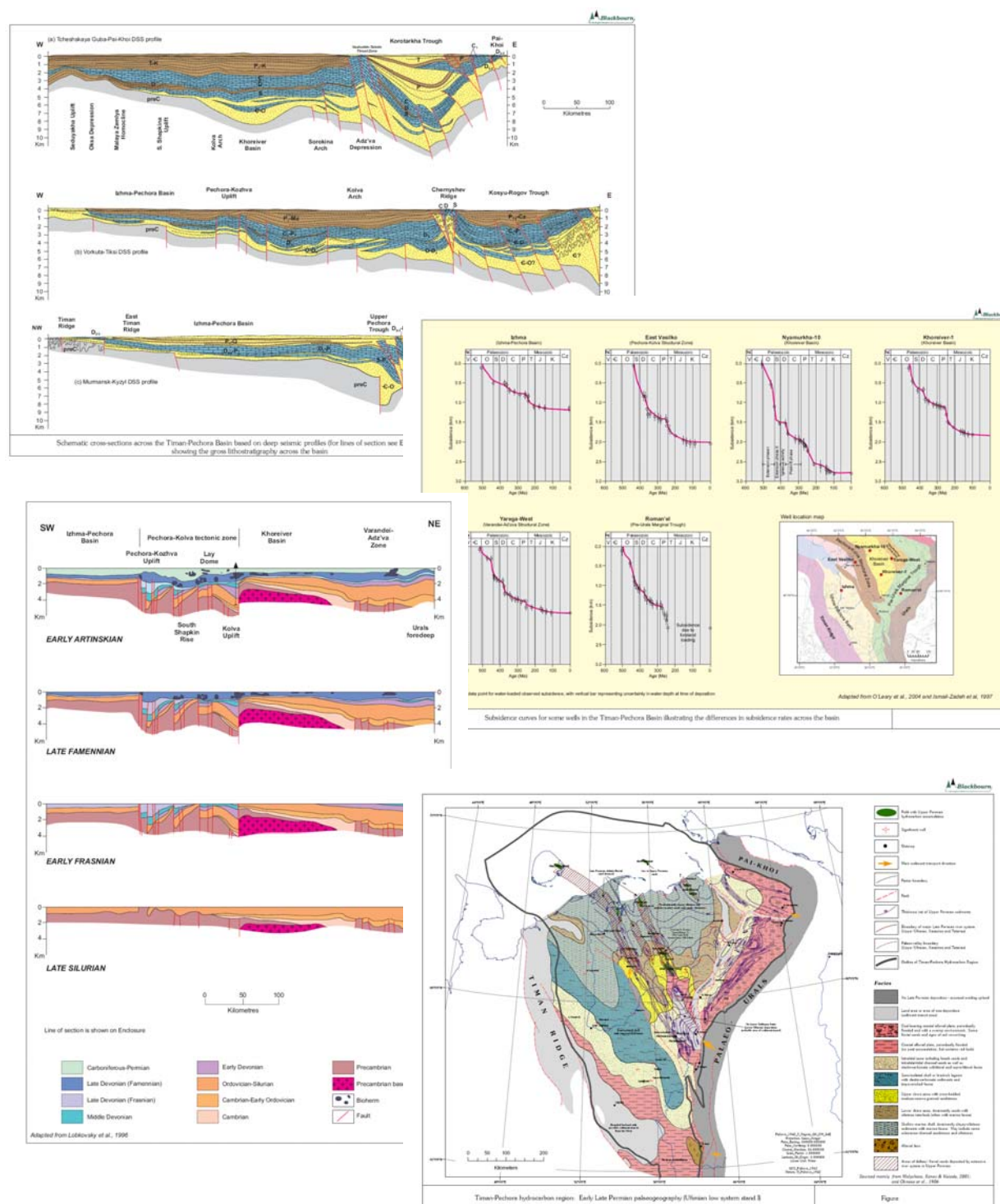


*Generalised geological map of the Timan-Pechora Basin*

Based extensively on material already held in-house, the report includes **numerous illustrations**, and appropriate extracts from the company's **database of oil and gas fields** of the FSU.

All maps are georeferenced and available in **ArcGIS format**.

## Petroleum Geology of the Timan-Pechora Province



For further details on this report, including costs and timing, please visit [www.blackbourn.co.uk/reports/timan-pechora.html](http://www.blackbourn.co.uk/reports/timan-pechora.html) or contact Dr Graham Blackbourn at:

## Blackbourn Geoconsulting

15A Seaview Place, Bo'ness, West Lothian, EH51 0AJ, UK

[www.blackbourn.co.uk](http://www.blackbourn.co.uk), [info@blackbourn.co.uk](mailto:info@blackbourn.co.uk)