

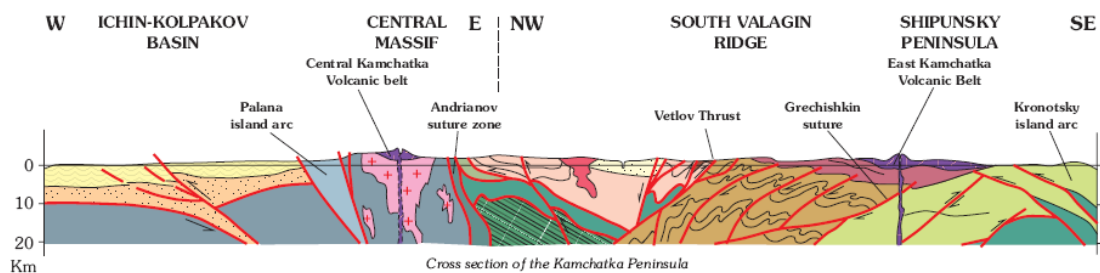
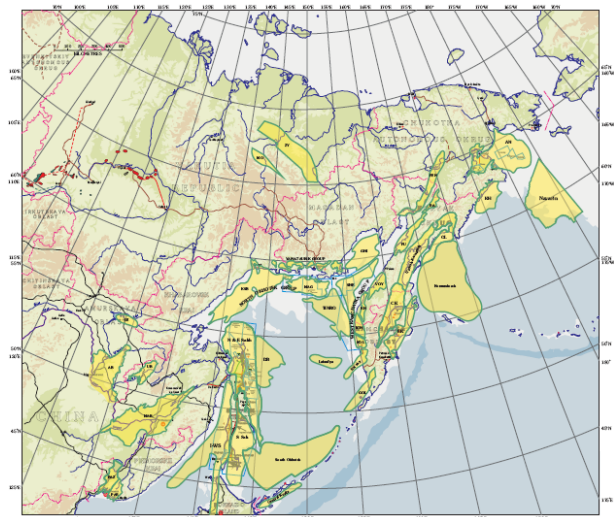


Petroleum Geology of the Russian Far East

A major study based on a comprehensive analysis of the Russian-language and International literature

The Pacific border of Russia's Far East is perhaps the most accessible major hydrocarbon province in the FSU, lying within easy reach of the Japanese and North American markets. Despite political setbacks and technological difficulties, not least being the seasonal presence of sea ice, oil fields on the shelf around Sakhalin Island are now being developed by consortia of multinational companies.

The Sakhalin basin is, however, only one of a number of known and prospective basins in the region. As the infrastructure is developed in the area, further exploration opportunities are arising round Sakhalin and in other Far-Eastern basins, both on- and offshore. The report considers the tectonic and structural development of the entire Russian Far East, before describing the geological history and stratigraphy of individual basins.

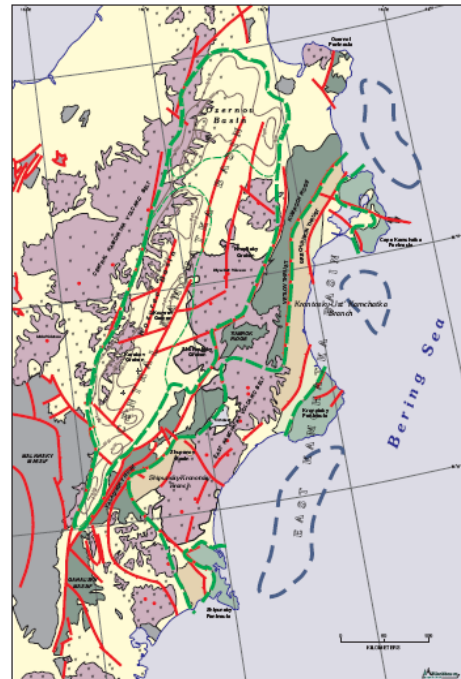


Particular emphasis is placed on the nature and distribution of known and potential reservoir and source horizons and the development of hydrocarbon systems.

The Petroleum Geology of the Russian Far East

The main basins covered include (roughly from North to South):

- Momo-Zyryan Basin
- Anadyr Basin
- Navarin Basin
- Khatyrka Basin
- Penzhina Basin
- Pustorets, Olyutor, Il'pinsk-Karaginsk and Komandorsk Basins
- Okhotsk-Kamchatka Group of Basins
- Central and East Kamchatka Basins
- Sakhalin-Okhotsk Group of Basins
- South Okhotsk Group of Basins
- Ishikari-West Sakhalin Group of Basins
- Upper Bureya Basin
- Middle Amur Basin
- Amur-Bureya Basin



Central and East Kamchatka Basins

Part I: Introduction to the Russian Far East and its Structural Development

- Chapter 1 The Russian Far East: Introduction and Infrastructure.
- Chapter 2 Tectonic Evolution of the Russian Far East since the Palaeozoic.

Part II: Petroleum Geology & Hydrocarbon Prospectivity of the Russian Far East

- Chapter 1 The Mesozoic Basins of Pre-Amur'e and Momo-Zyryan.
- Chapter 2 Basins of the Bering Sea Shelf and Adjacent Land Areas.
- Chapter 3 The North Okhotsk-West Kamchatka Basin Group.
- Chapter 4 Sakhalin Basin Group.
- Chapter 5 Isikari-West Sakhalin Basin Group.
- Chapter 6 South Okhotsk Basin.

Appendix: Field Database

Extract from Blackburn Geoconsulting's FSU Oil & Gas Field Database.

Timing & Cost

This report is available now at a cost of **US \$32,000**. For further details on this report, please visit www.blackbourn.co.uk/reports/russian-far-east.html or contact Dr Graham Blackburn at:

Blackbourn Geoconsulting
26 East Pier Street, Bo'ness, West Lothian, EH51 9AB, UK
Tel: +44 (0)1506 828110, Fax: +44 (0)1506 829850
www.blackbourn.co.uk, info@blackbourn.co.uk